

EchoPanel® Trio

Designer: Woven Image

Application(s): Walls, Workstations, Partitions

Composition & Pattern

Composition	100% PET (60% post-consumer recycled)
Colours Available	5
Weave	Non woven
Pattern Type	Printed
Printed Sides	Double
Print Area	Horizontal: 1185mm, Vertical: 2780mm
Print Tolerance	Horizontal: +/- 10mm, Vertical: +/- 10mm
Pattern Repeat	Horizontal: 65mm, Vertical: 65mm

Dimensions & Weight

Dimensions	Length: 2800mm (+/- 10mm), Width: 1200mm (+/- 5mm), Thickness: 12mm (+/- 7%)
Unit of Sale	Panel
Unit of Sale Net Weight (kg)	8

Performance

Fire Test Result AS 1530.3, BS EN 13501.1: Classification B - s1, d0, GB 8624 B1, ISO 9705: Group 1

Acoustic Performance Standard Test Method AS ISO 11654: 2002 (2016), AS ISO 354: 2006 (R2016), ASTM C423 - 17

Noise Reduction Coefficient (NRC) Result Direct fix: 0.45, 20mm air gap: 0.60, 50mm air gap: 0.75

Sound Absorption Average (SAA) Result Direct fix: 0.43, 20mm air gap: 0.61, 50mm air gap: 0.75

Weighted Sound Absorption Coefficient (α_w) Result Direct fix: 0.30 (MH), 20mm air gap: 0.45 (MH), 50mm air gap: 0.60 (MH)

Sound Absorption Class D (Direct fix), D (20mm air gap), C (50mm air gap)

Additional Acoustic Information Noise reduction coefficient result key: H = High Frequency & MH = Mid to High Frequency

Colour Fastness to Light Standard Test Method ISO 105 B02

Colour Fastness Light Rating 6 - 7

Sustainability

VOC Emissions Results ASTM D5116: TVOC Emissions Rate: <0.093mg/m²/hr (7 days)

Sustainability Performance

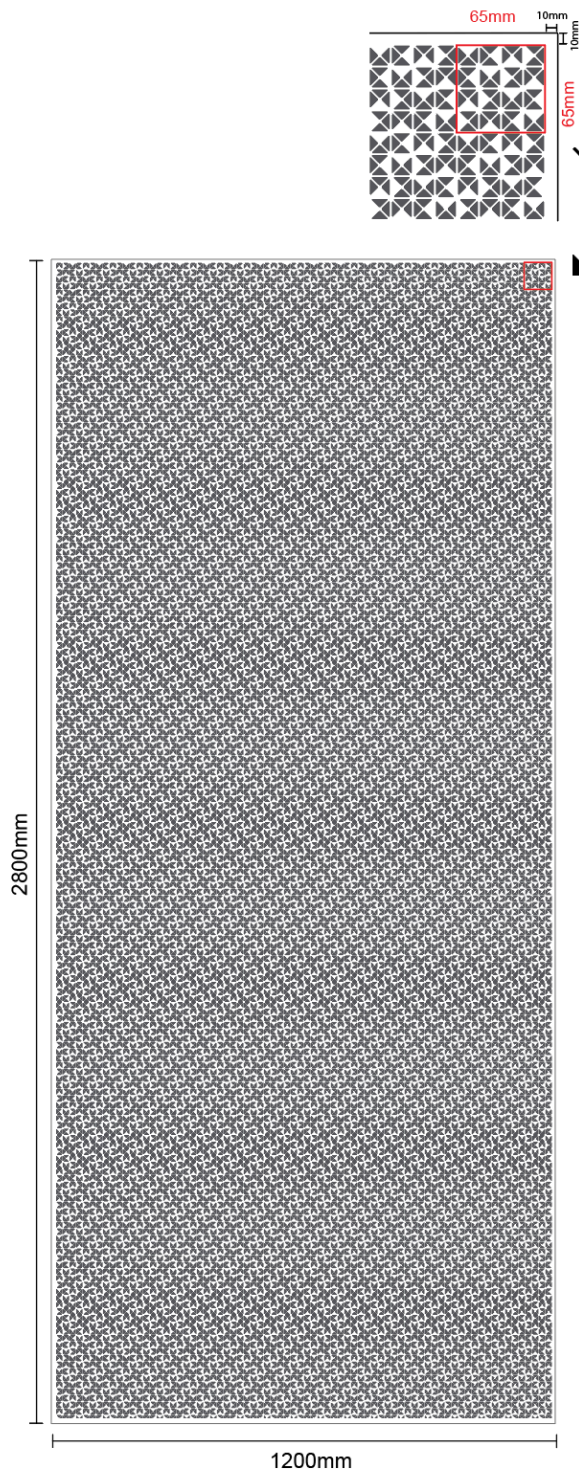




Environmental Product Declaration (EPD)

Instructions

Product Care Instructions See Woven Image EchoPanel Installation Guide



DESIGN: EchoPanel® Trio
PATTERN REPEAT: Horizontal: 65mm, Vertical: 65mm