
ECHOPANEL® COLLECTION



CONTENTS

ECHOPANEL® COLLECTION	01
ENVIRONMENTAL STORY	03
COLOUR STORY	05
ECHOPANEL® PALETTE	06
SPECIFICATIONS & PERFORMANCE	07
PRECISION CUT DESIGNS	08
ECHOPANEL® ALIGN	09
ECHOPANEL® OHM	10
ECHOPANEL® PALACE	11
ECHOPANEL® EMPIRE	12
ECHOPANEL® LATITUDE	13
ECHOPANEL® LONGITUDE	14
ECHOPANEL® MERIDIAN	15
PRODUCT PORTFOLIO	16
ECHOPANEL® ARRAY	17
ECHOPANEL® ELEMENT	18
PENDENTS & SCREENS	19
BALANCE ACOUSTIC TILES	20
ECHOPANEL® ADAPT	21
PRINT DESIGNS	22



Cover image: EchoPanel® **EMPIRE** & **ALIGN** in colour 550
This page: EchoPanel® **12mm** in colour 660

Disclaimer Due different screen configurations, images may not represent the true colour.
Always confirm your colour choice with your Woven Image Representative.

We recommend you request a sample prior to ordering.

ECHOPANEL® COLLECTION

Invented and launched by Woven Image in 2004, EchoPanel® is the original decorative interior panelling solution, with acoustic qualities and eco-innovation at its core.

EchoPanel® reduces and controls reverberated noise in shared environments, making it ideal for use in a variety of commercial interior spaces including workplace, education and hospitality environments.

It is a streamlined product with a fabric-like finish, designed with dematerialisation in mind. Once it has been installed, there is no need to upholster, paint or protect it.

Pioneering the war against single-use plastic, EchoPanel® production uses post-consumer recycled PET bottles to create a superior upcycled product with a vast array of interior applications.

EXTENSIVE PRODUCT RANGE

EchoPanel® offers an extensive colour palette that is tailored over time to match design trends. The solid colour remains consistent throughout the thickness of the panel, so you can cut, create and install without the need for edging or capping.

EchoPanel® also boasts an extensive range of inspiring prints and precision cut designs, making it the go-to brand for creative Architects and Interior Designers.

Offered in 3 panel thicknesses; 7mm, 12mm and 24mm. Panel sizes are 2800mm x 1200mm¹ and precision cut panels are 2750mm x 1100mm¹, allowing for a seamless floor-to-ceiling application.

APPLICATIONS

EchoPanel® is durable, lightweight, and easy to cut and install, making it ideal for a multitude of wall, ceiling and free-standing interior applications. Frequent installations include:

- Wall panelling: direct fix installation or create an air gap for greater acoustic performance.
- Feature wall tiling².

- Ceiling applications: direct fix, suspended systems or baffles.
- Workstations: due to its pinnable nature, it is ideal for single or double-sided division on a workstation.
- Free-standing partitioning systems²: ideal in the 24mm thickness.
- Hanging pendants²: for dividing a space with privacy and acoustic control.

The Woven Image inhouse Design and Commercial Services teams offer Architects and Designers endless possibilities when it comes to creating a bespoke designer look. Providing expert advice on ceiling installations, custom printing and custom precision cutting projects, as well as supplying complex design CAD drawings and technical plans.

ACOUSTIC CONTROL

Controlling reverberated noise is a crucial factor in creating comfortable and productive environments, be it a professional workplace, learning environment, social setting or other public spaces.

EchoPanel® is optimised for acoustic performance and has been independently tested, in accordance with AS ISO 354: 2006 (R2016). Sound performance indices have been calculated in accordance with AS ISO 11654: 2002 (2016), with NRC and SAA defined by ASTM C423 - 17.

DESIGNED FOR COMMERCIAL INTERIORS

EchoPanel® has undergone many forms of industry testing and complies with some of the world's highest mandatory standards.

Its fire-retardant properties have been developed so that it is an excellent performer in the safety arena. It holds first-class ratings in Australasian and International markets, achieving a Group 1 rating in the 'ISO 9705' full-scale room fire test. EchoPanel® 12mm has also been awarded the internationally recognised 'BS EN 13501.1: Classification B - s1, d0'.

¹ Manufacturing tolerances apply

² Visit wovenimage.com



ECHOPANEL® COLLECTION

ENVIRONMENTAL STORY

Pioneering the war against single-use plastic, EchoPanel® production uses post-consumer recycled PET bottles to create a superior upcycled product with a vast array of interior applications. This approach to product design saves tonnes of plastic waste from entering our oceans and landfill each year.

Dematerialisation, recycling, upcycling and life cycle management were, and still are, at the foundation of EchoPanel®'s design.



ENVIRONMENTAL CERTIFICATION

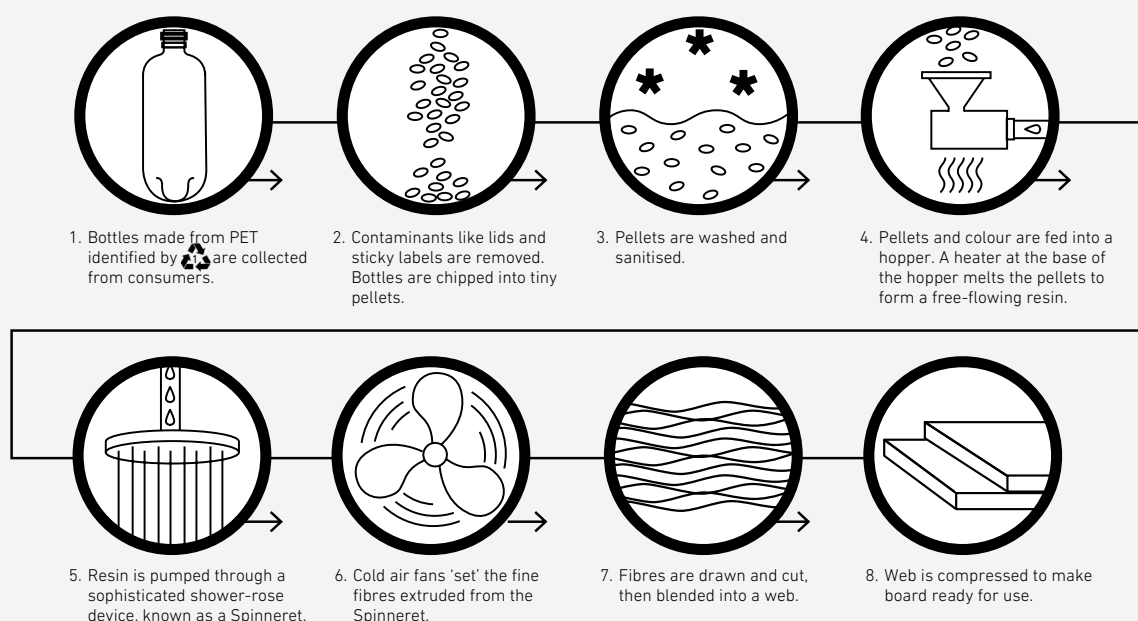
EchoPanel® is a Climate Active certified Carbon Neutral Product which achieves Global GreenTag™ certification (Green Rate Level A) with the maximum Product Health Declaration™: Platinum Health for EchoPanel® plain colours³. It is Red List Free and has published ingredient transparency with Declare.

Furthermore, EchoPanel® can secure credits under the following sustainable building rating tools:

- Green Star, as administered by Green Building Council Australia.
- WELL™ Building Standard, International WELL Building Institute.
- Leadership in Energy and Environmental Design (LEED v4.1).

EchoPanel®'s acoustic benefits, along with its extensive colour, design and customisation properties, offers designers the freedom to create stylish, unique and sustainable interior spaces.

MANUFACTURING PROCESS OF ECHOPANEL®



³ Visit wovenimage.com for further information, or a copy of our full Environmental Product Declaration

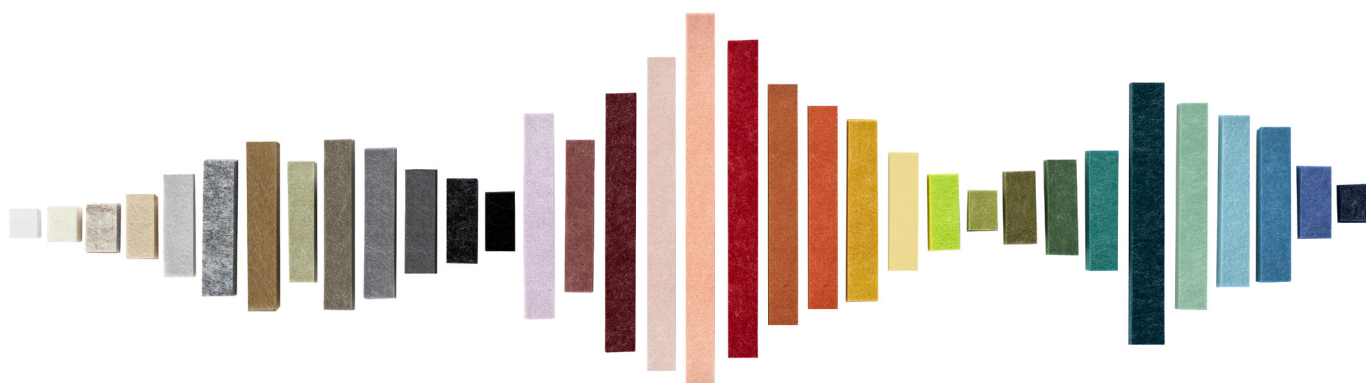


ECHO PANEL® COLLECTION

COLOUR STORY





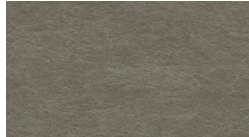
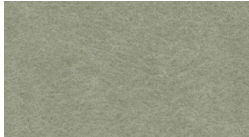
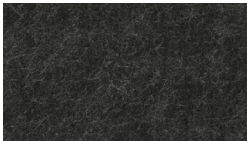







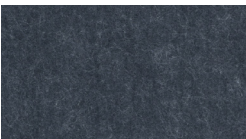
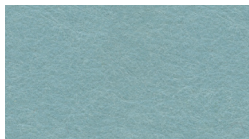
EchoPanel® **LONGITUDE** in colour 484, EchoPanel® **EMPIRE** in colour 454 & EchoPanel® **LATITUDE** in colour 495



EchoPanel® is available in a comprehensive range of neutral, mid tone and vibrant colours. Due to its unique manufacturing process, the colour remains consistent throughout the depth of the panel.

The standard 12mm range includes all 34 colours, with a selection of these colours also available in 7mm and 24mm thickness.

ECHOPANEL® PALETTE

				
500	101	908	454	468
				
447	442	444	402	580
				
550	542	274		
				
269	193	484	487	495
				
167	295	721	124	106
				
349	384	579	381	
				
330	338	573		
				
365	660	633	551	

QUICK REFERENCE GUIDE

PANEL DIMENSIONS	12mm x 2800mm x 1200mm 0.47" x 110.24" x 47.24"																							
	24mm x 2800mm x 1200mm 0.94" x 110.24" x 47.24"																							
12mm (0.47")	101	106	124	167	193	269	274	295	330	338	349	365	381	384	402	442	444	447	454	468	484	487	495	500
24mm (0.94")																								

ECHOPANEL® COLLECTION

SPECIFICATIONS

PRODUCT	ECHOPANEL® 7mm Plain	ECHOPANEL® 12mm Plain	ECHOPANEL® 24mm Plain
COMPOSITION	100% PET (60% post-consumer recycled)	100% PET (60% post-consumer recycled)	100% PET (60% post-consumer recycled)
WEIGHT	4.7kg	8kg	10kg
THICKNESS	7mm (+/- 7%)	12mm (+/- 7%)	24mm (+/- 7%)
PANEL DIMENSIONS	2800mm (+/- 10mm) x 1200mm (+/- 5mm)	2800mm (+/- 10mm) x 1200mm (+/- 5mm)	2800mm (+/- 10mm) x 1200mm (+/- 5mm)

PERFORMANCE

COLOUR FASTNESS TO LIGHT	ISO 105 B02: Rating 6 - 7	ISO 105 B02: Rating 6 - 7	ISO 105 B02: Rating 6 - 7
FIRE TEST	ISO 9705: Group 1, AS 1530.3, BS 476: Class 2	AS 1530.3 BS EN 13501.1: Classification B - s1, d0 ISO 9705: Group 1 BS EN 45545-2 + A1 Annex C: CIT: 0.05 ASTM E84 Unadhered: Class 1 or A	BS EN 13501.1: Classification B - s1, d0 ISO 9705: Group 1 BS EN 45545-2 + A1 Annex C: CIT: 0.00 ASTM E84 Unadhered: Class 1 or A
SOUND ABSORPTION	AS ISO 354: 2006 (R2016) (direct fix results) α_w : 0.20 (H) NRC: 0.25 SAA: 0.24 Class: E	AS ISO 354: 2006 (R2016) AS ISO 11654: 2002 (2016) ASTM C423 - 17 (direct fix results) α_w : 0.30 (MH) NRC: 0.45 SAA: 0.43 Class: D	AS ISO 354: 2006 (R2016) (direct fix results) α_w : 0.45 (MH) NRC: 0.65 SAA: 0.63 Class: D
FLEXURAL PROPERTIES		ISO 1209 - 1: 2007 @20mm Deflection Direction 1 = 37.3N, Direction 2 = 39.1N	ISO 1209 - 1: 2007 @20mm Deflection Direction 1 = 39.7N, Direction 2 = 39.8N
VOC EMISSIONS	ASTM D5116: TVOC Emissions Rate: <0.02mg/m ² /hr (7 days), and CDPH Standard Method v1.2: TVOC Emissions Rate: <0.054mg/m ³ ; Formaldehyde Emissions Rate: <2µg/m ³	ASTM D5116 - 2017: TVOC Emissions Rate: 0.033mg/m ² /hr (24hrs); Formaldehyde Emissions Rate: 0.07mg/m ² / hr. CDPH Standard Method v1.2 - 2017 (CA 01350): TVOC Emissions Rate: 0.013mg/m ³ ; Formaldehyde Emissions Rate: <1µg/m ³	ASTM D5116: TVOC Emissions Rate: <0.02mg/m ² /hr (7 days), and CDPH Standard Method v1.2: TVOC Emissions Rate: <0.054mg/m ³ ; Formaldehyde Emissions Rate: <2µg/m ³

PRECISION CUT DESIGNS



PRECISION CUT DESIGNS

ECHOPANEL® ALIGN



EchoPanel® ALIGN in colour 349

COLOURS

Full EchoPanel® 12mm & 24mm colour range - see page 6

PANEL DIMENSIONS

2750mm (+/- 2mm) x 1180mm (+/- 2mm)

PANEL THICKNESS

12mm | 0.47"

24mm | 0.94"

For additional specifications and performance details please visit wovenimage.com

PRECISION CUT DESIGNS

ECHOPANEL® OHM



EchoPanel® OHM in colour 454

COLOURS

Full EchoPanel® 12mm & 24mm colour range - see page 6

PANEL DIMENSIONS

2750mm (+/- 2mm) x 1100mm (+/- 2mm)

PANEL THICKNESS

12mm | 0.47"

24mm | 0.94"

For additional specifications and performance details please visit wovenimage.com

PRECISION CUT DESIGNS

ECHOPANEL® PALACE



EchoPanel® **PALACE** in colour 349

COLOURS

Full EchoPanel® 12mm & 24mm colour range - see page 6

PANEL DIMENSIONS

2750mm (+/- 2mm) x 1100mm (+/- 2mm)

PANEL THICKNESS

12mm | 0.47"
24mm | 0.94"

For additional specifications and performance details please visit [wovenimage.com](https://www.wovenimage.com)

PRECISION CUT DESIGNS

ECHOPANEL® EMPIRE

**COLOURS**

Full EchoPanel® 12mm & 24mm colour range - see page 6

PANEL DIMENSIONS

2750mm (+/- 2mm) x 1100mm (+/- 2mm)

PANEL THICKNESS

12mm | 0.47"

24mm | 0.94"

For additional specifications and performance details please visit wovenimage.com

PRECISION CUT DESIGNS

ECHOPANEL® LATITUDE



EchoPanel® LATITUDE in colour 384

COLOURS

Full EchoPanel® 12mm & 24mm colour range - see page 6

PANEL DIMENSIONS

2750mm (+/- 2mm) x 1100mm (+/- 2mm)

PANEL THICKNESS

12mm | 0.47"

24mm | 0.94"

For additional specifications and performance details please visit [wovenimage.com](https://www.wovenimage.com)

PRECISION CUT DESIGNS

ECHOPANEL® LONGITUDE

**COLOURS**

Full EchoPanel® 12mm & 24mm colour range - see page 6

PANEL DIMENSIONS

2750mm (+/- 2mm) x 1100mm (+/- 2mm)

PANEL THICKNESS

12mm | 0.47"

24mm | 0.94"

For additional specifications and performance details please visit [wovenimage.com](https://www.wovenimage.com)

PRECISION CUT DESIGNS

ECHO PANEL® MERIDIAN



COLOURS

Full EchoPanel® 12mm & 24mm colour range - see page 6

PANEL DIMENSIONS

2750mm (+/- 2mm) x 1100mm (+/- 2mm)

PANEL THICKNESS

12mm | 0.47"

24mm | 0.94"

For additional specifications and performance details please visit [wovenimage.com](https://www.wovenimage.com)

PRODUCT PORTFOLIO



PRODUCT PORTFOLIO

ECHO PANEL[®] ARRAY

ARRAY FLOW 24mm suspended in colours 633, 349 & 908

EchoPanel[®] Array is an acoustic ceiling baffle solution utilising 12mm (0.47") and 24mm (0.94") EchoPanel[®], with streamlined hardware engineered for easy installation, and scalable for both small and large applications.

Woven Image have developed Array to require up to 60% less hardware compared to most other baffle solutions on the market. Array baffles can be directly fixed to ceilings or suspended. It is available to be used in both horizontal and vertical applications, allowing for a seamless finish from ceiling to wall.

Ceiling hardware:**ARRAY RAIL**

2.5m long aluminium rail that holds Array baffles in place. In white or black powder coat.

**SNAP COVERS**

2.5m long aluminium profile, cut to size and snapped into the underside of Array rails to create spacing between Array baffles.

**END CAPS**

Screwed onto the end of a rail for a clean finish. (Tek screws included)

Additional hardware:**JOINER PLATE**

To connect multiple rail runs for larger ceiling applications (Tek screws included).

**SUSPENSION KIT**

To suspend Array baffles, rails and Fuji tiles from ceiling.

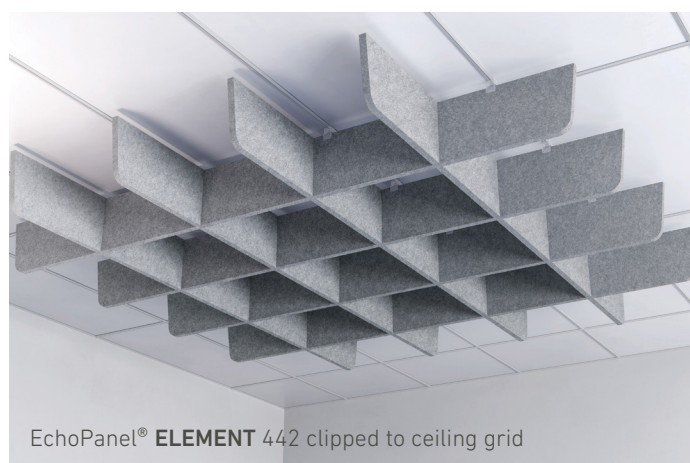
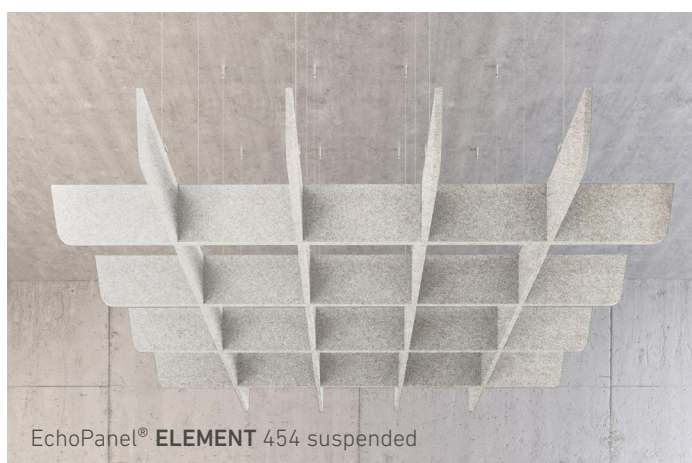
For additional specifications and performance details please visit [wovenimage.com](https://www.wovenimage.com)

ECHOPANEL® ELEMENT



EchoPanel® Element is a practical, design-led acoustic ceiling solution. It is easy to install, fixing directly to a ceiling or attaching to a ceiling grid using cleverly designed translucent clips.

There is also the option to order a suspension kit solution, allowing EchoPanel® Element to appear to float, creating a design focus, as well as providing an acoustic baffle. There are 3 different colours available, all chosen to enhance a variety of contemporary commercial interior settings.



For additional specifications and performance details please visit wovenimage.com

PENDENTS & SCREENS



EchoPanel® **SUMMIT** pendants in colours 442 and 365

EchoPanel® Space Dividers allow designers to stylishly define areas within open-plan spaces, whilst delivering privacy and acoustic control. The range includes ceiling-suspended pendants and free-standing space dividers.



EchoPanel® **PALING** space divider in colour 542 with cream pivot joiners

For additional specifications and performance details please visit wovenimage.com

BALANCE ACOUSTIC TILES



BALANCE 1340 tiles in colour 330

Balance acoustic tiles are made using 24mm EchoPanel® for enhanced sound absorption performance. Available in 2 styles; Balance 670 and Balance 1340, they are designed with a classic cut chamfer on all edges to create a seamless shadow-filled join between tiles. Both styles can be easily installed horizontally or vertically, on walls to configure your own unique design.



BALANCE 1340 tiles in colour 454 and BALANCE 670 tiles in colour 384

For additional specifications and performance details please visit wovenimage.com

ECHOPANEL® COLLECTION

ECHOPANEL® ADAPT



EchoPanel® **ADAPT CLASSIC** screen
in colour 454 with cream
desk clamps

EchoPanel® Adapt workstation screens are available in two different sizes (Adapt Classic: 1790mm x 780mm and Adapt Social: 1790mm x 544mm). They are pinnable, provide privacy and assist in reducing reverberated noise in work spaces. Choose from 3 colours in the EchoPanel® 24mm range.

They are easy to install using our unique desk clamps which are available in charcoal (542) and cream (908) colours.



EchoPanel® **ADAPT SOCIAL** in colour 542 with charcoal desk clamps

For additional specifications and performance details please visit wovenimage.com

ECHO PANEL® COLLECTION

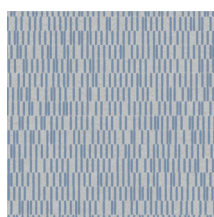
PRINT DESIGNS

Shown here are a small selection of our printed EchoPanel® designs, each available in 20 colours to complement the EchoPanel® colour palette. These can be printed single or double-sided, making them suitable for walls, ceilings and partitions.

Woven Image has a long history of working with global design and manufacturing clients to deliver unique customised prints. Contact us to discuss your project requirements.



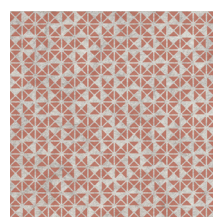
Otto



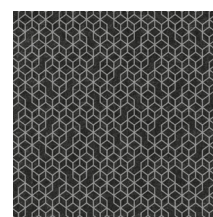
Frequency



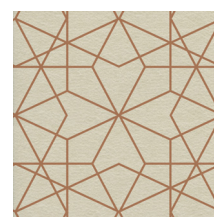
Trapeze



Trio

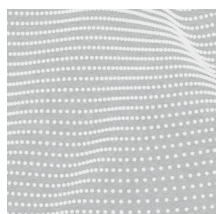


Astro

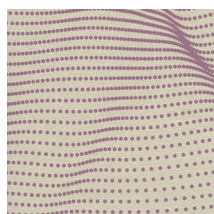


Kaleidoscope

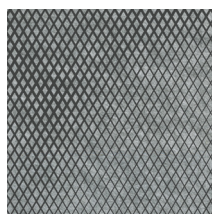
Michael Jounney COLLECTION



Cloudy



Fluid



Mineral



FREQUENCY print in colour 576

For additional specifications and performance details please visit wovenimage.com

PRINT DESIGNS



Michael Young **FLUID** print in colour 349

For additional specifications and performance details please visit wovenimage.com

